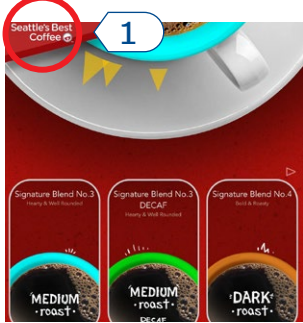


# Serenade™ Single Cup Brewer

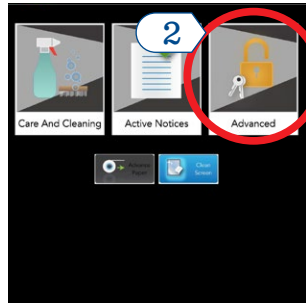
## Menu Setup & Daily Usage Guide

### Menu Setup: Accessing the Product Setup Screen

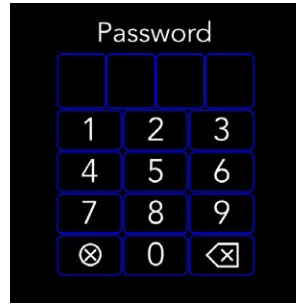
The Product Setup Screen is the main screen where all Serenade™ drink setup takes place. Accessing the Product Setup Screen will be described here.



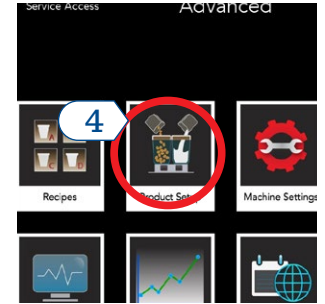
1) Press & hold the upper left corner of the Home screen. (approx. 5 seconds).



2) Select the Advanced folder.

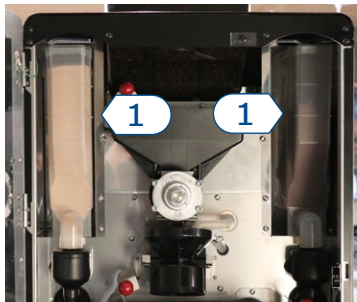


3) Enter passcode 6601.



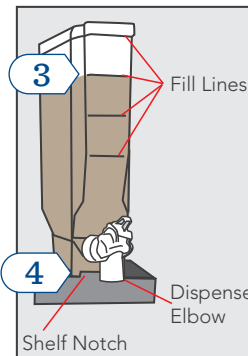
4) Select the Product Setup folder.

### Refilling the Cocoa & Chai Hoppers

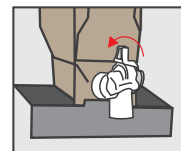


1) Open the machine. The hoppers are located on the left and right ends of the machine.

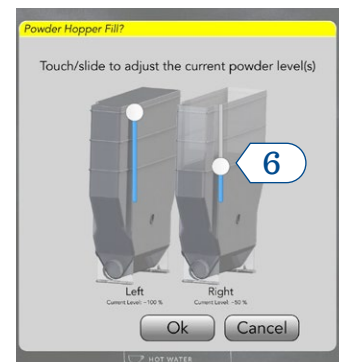
3) Pull the hopper out and refill. Note which fill level line the product fills to.



4) Re-insert the hopper. **IMPORTANT: Ensure it is all the way behind the small notch in front of the shelf.**

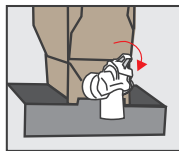


5) Open the dispense elbow by pushing the tab up



6) Close the door. Indicate the hopper fill level by pressing the onscreen fill line associated with the internal hopper.

5) Close the soluble hoppers by turning down the tab on the dispense elbow.



### Menu Setup: Assigning Powder Hoppers

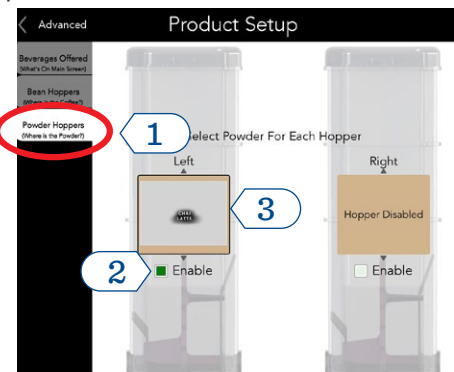
Here you will align which soluble beverages are physically in the brewer's hopper with the drink selection buttons.

2) From the Product Setup screen, select the Powder Hopper tab on the left.

3) Click on the box next to *Enable* to activate the hopper. The box should turn green.

4) Swipe the beverage type on each hopper to select the beverage that aligns to the hoppers in the machine.

5) Press Save when the hoppers are assigned.



# Menu Setup & Daily Usage Guide

## Menu Setup: Assigning Bean Hoppers

Here you will align which coffee beans are physically in the brewer's bean hopper with the brewer's drink selection buttons.



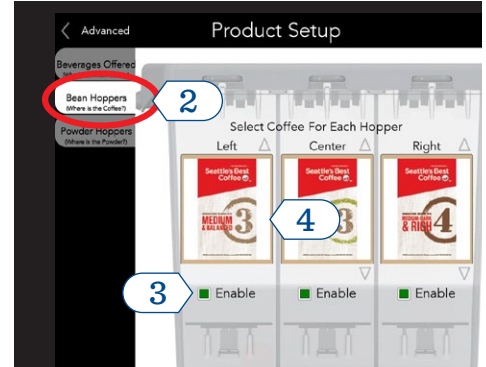
1) To avoid confusion, ensure coffee labels are attached to the brewer's coffee hoppers.

2) From the Product Setup screen, select the Bean Hopper tab on the left.

3) Click on the box next to *Enable* to activate the hopper. The box should turn green.

4) Swipe the coffee blend name on each hopper to select the coffee blend that aligns to the coffee bean hoppers on top of the brewer.

5) Press Save when all hoppers are assigned.



## Menu Setup: Home Screen

Here you will define the order in which drink options will appear on the Home screen and the available drink sizes.

1) From the Product Setup folder, ensure you are on the Beverages Offered tab to the left.

2) Select your beverages:

- Scroll to the beverage to be offered by swiping the beverage pictures or by using the arrows.
- Select the coffees and beverages to be offered by clicking on the box next to "Enable" until the box turns green.

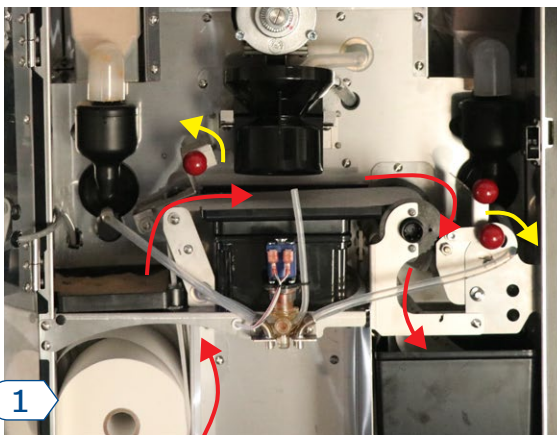
3) Once all beverages to be offered are enabled, one-by-one press on their on screen image until the edges of the image turns blue.

4) In the box at the bottom of the screen, press the available drink sizes until the box turns green.

5) Press Save in the lower right corner once complete.



## Replacing the Paper Filter



1) Place filter paper roll in compartment in lower left of machine

2) Feed filter paper through machine following the red arrows in the image (left).

3) Close machine. Cancel out of the hopper fill level screen and go to the Service Access screen.

4) Press and hold the "Advance Paper" button until you hear the tractor drive motor stop

5) Return to the Home Screen.

